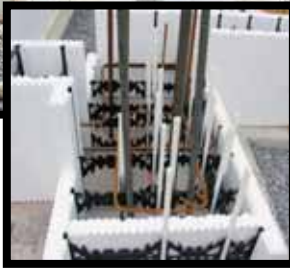


INTEGRASPEC[®]

"The User Friendly ICF"

FEATURE PROJECT



Project: the Church of Saint George and Saint Antony

Architect: EMA Architects

Contractor: Mar Gard Builders Limited

Engineer: DAIDO Group Inc. Structural Engineers

ICF Consultant: EMM Group

Gloucester, Ontario

Nepean, Ontario

Nepean, Ontario

Ottawa, Ontario

Sarsfield, Ontario

Features: This 13,000 ft² church addition was built with an average of 12' high walls with 12" reinforced concrete. Thirty – six (36) different sized pilasters were formed within the walls using IntegraSpec[®] and incorporating various rebar designs and sizing to suit structural load requirements.

Benefits: The IntegraSpec[®] ICF patented design eliminated form float, form compaction, form failure, and form waste. This mammoth foundation was completed within budget and on schedule without one set back. The accuracy of this complicated project impressed every professional associated with and visiting this high profile lower level.

"The walls were originally designed for conventional construction. Due to their height and the lack of conventional companies specializing in high concrete walls, it was less expensive and easier to build 12' walls with ICF rather than going conventional. That's when IntegraSpec[®] was considered - with its ability to build tall walls and incorporating over 36 pilasters throughout the walls. By using IntegraSpec[®], the walls were also insulated, ready to apply the finishes, and ready for heating as the balance of this structure is being built during the winter months. Highly recommended."

*- Mr. Gaston Gaudet
Project Manager*



Specify *Integrity* in your next project:

Please visit us at www.integraspec.com

